



www.YouTube.com/toxgermany

Properties

- Loved by women: Thanks to their special geometry, the screws are easy to insert
- Fixing cap protects the surface and prevents slippage into the drill hole
- Holds secure in almost all building materials
- Secure knotting in cavities
- Provides reliable expansion in solid brick
- Equal distribution of force
- Anti-rotation features
- Wide variety of screws per fixing size
- Detachable fixing cap for flush and through installation

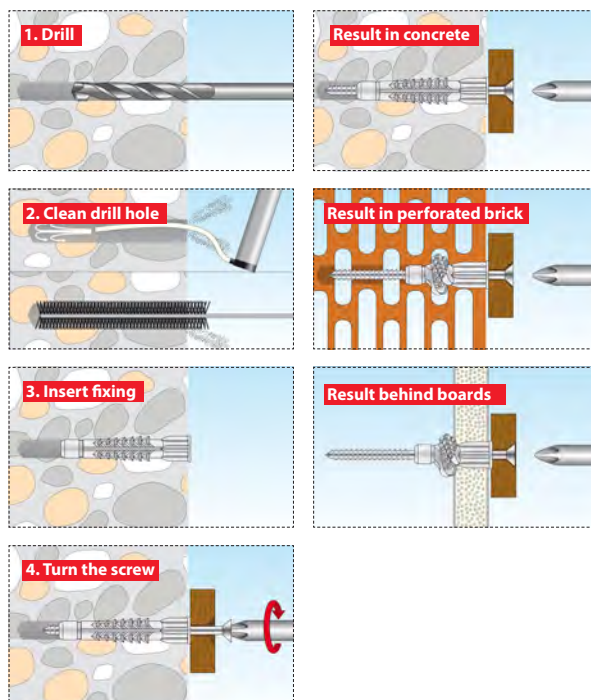
Description & application

- All-purpose fixing for virtually all building materials
- 4-part expanding anchor for equal distribution of forces
- Anti-rotation feature on the fixing neck and rotary wing on the fixing body prevent spinning in the building material
- Deco + screw: Screw with PZ drive



Handling & installation

- Make a drill hole the size of the fixing diameter
- Drill into perforated brick and gypsum plasterboard without impact to prevent webs in the perforated brick from breaking away
- Drill into gypsum plasterboard using a wood or metal drill
- Use impact to drill into concrete and solid brick
- Min. screw length = fixing length + thickness of the object to be mounted + 1x screw Ø
- Select the largest possible screw Ø for through installation
- Pre-positioned installation possible








Building materials & load bearing values



Deco	Concrete C 20/25	Solid brick MZ 12	Perforated brick ≥ Hlz12, bulk density ≥ 1 kg/cm ³	Cavity brick ≥ Hbl2	Porous concrete ≥ PB2, PP2	Gypsum plasterboard 12.5 mm	Gypsum fibre board 12.5 mm
5/25	20 kg	10 kg	10 kg	10 kg	-	-	-
6/28	40 kg	30 kg	15 kg	10 kg	-	-	-
6/41	60 kg	40 kg	20 kg	15 kg	7 kg	10 kg	25 kg
8/49	100 kg	60 kg	25 kg	20 kg	10 kg	10 kg	30 kg
10/66	120 kg	80 kg	30 kg	25 kg	15 kg	-	30 kg
12/76	130 kg	100 kg	40 kg	40 kg	20 kg	-	-

- The load bearing values indicated relate to chipboard screws with the largest screw diameter; thread shape similar to DIN 7998
- The anchorage depth of the fixing must be observed
- The drilling process and drill hole cleaning must be appropriate to the building material
- The recommended loads apply only to installation in the building material and not for installation in gaps
- Approved fixings must be used for mountings where safety is a factor (see also fixing 1x1)
- Where items have a screw included, any variant values on the packaging must be observed

Packaging	Art. no.	Type	Fixing contents	Screw contents	Fixing Ø	Fixing length	Screw size	Drill Ø	min. drill hole depth	min. insertion depth	Size of object to be mounted	Approval
	Deco		per pack	per pack	mm	mm	Ø mm	d₀ Ø mm	h₁ ≥ mm	h_{ef} mm	t_{fix} ≤ mm	ETA / DIBt approval
	016 100 011	5/25*	100x	-	5	25	3.0 - 4.0	5	35	24	-	-
	016 100 021	6/28*	100x	-	6	28	3.5 - 5.0	6	40	27	-	-
	016 100 031	6/41	100x	-	6	41	3.5 - 5.0	6	50	40	-	-
	016 100 051	8/49	100x	-	8	49	4.0 - 6.0	8	70	48	-	-
	016 100 081	10/66	50x	-	10	66	6.0 - 8.0	10	80	65	-	-
	016 100 101	12/76	25x	-	12	76	8.0 - 10.0	12	95	75	-	-
	Deco + screw		per pack	per pack	mm	mm	mm	d₀ Ø mm	h₁ ≥ mm	h_{ef} mm	t_{fix} ≤ mm	ETA / DIBt approval
	016 101 231	6/28 S*	100x	100x	6	28	4.5 x 40	6	40	27	8	-
	016 101 241	6/41 S	50x	50x	6	41	4.5 x 60	6	50	40	15	-
	016 101 271	8/49 S	25x	25x	8	49	6.0 x 70	8	70	48	15	-
	016 101 281	10/66 S	20x	20x	10	66	8.0 x 80	10	80	65	5	-
	Deco		per pack	per pack	mm	mm	Ø mm	d₀ Ø mm	h₁ ≥ mm	h_{ef} mm	t_{fix} ≤ mm	ETA / DIBt approval
	016 260 011	5/25*	120x	-	5	25	3.0 - 4.0	5	35	24	-	-
	016 260 021	6/28*	230x	-	6	28	3.5 - 5.0	6	40	27	-	-
	016 260 031	6/41	190x	-	6	41	3.5 - 5.0	6	50	40	-	-
	016 260 041	6/41	100x	-	6	41	3.5 - 5.0	6	50	40	-	-
	016 260 051	8/49	85x	-	8	49	4.0 - 6.0	8	70	48	-	-
	016 260 081	10/66	47x	-	10	66	6.0 - 8.0	10	80	65	-	-
	016 260 101	12/76	25x	-	12	76	8.0 - 10.0	12	95	75	-	-
	Deco		per pack	per pack	mm	mm	Ø mm	d₀ Ø mm	h₁ ≥ mm	h_{ef} mm	t_{fix} ≤ mm	ETA / DIBt approval
	016 700 011	5/25*	25x	-	5	25	3.0 - 4.0	5	35	24	-	-
	016 700 021	6/28*	20x	-	6	28	3.5 - 5.0	6	40	27	-	-
	016 700 031	6/41	20x	-	6	41	3.5 - 5.0	6	50	40	-	-
	016 700 051	8/49	10x	-	8	49	4.0 - 6.0	8	70	48	-	-
	016 700 081	10/66	6x	-	10	66	6.0 - 8.0	10	80	65	-	-
	016 700 101	12/76	4x	-	12	76	8.0 - 10.0	12	95	75	-	-
	Deco + screw		per pack	per pack	mm	mm	mm	d₀ Ø mm	h₁ ≥ mm	h_{ef} mm	t_{fix} ≤ mm	ETA / DIBt approval
	016 701 011	5/25 S*	12x	12x	5	25	3.5 x 40	5	35	24	12	-
	016 701 021	6/28 S*	10x	10x	6	28	4.5 x 40	6	40	27	8	-
	016 701 031	6/41 S	8x	8x	6	41	4.5 x 60	6	50	40	15	-
	016 701 051	8/49 S	6x	6x	8	49	6.0 x 70	8	70	48	15	-
	016 701 081	10/66 S	4x	4x	10	66	8.0 x 80	10	80	65	5	-
	016 701 101	12/76 S	2x	2x	12	76	10.0 x 90**	12	95	65	6	-

* suitable only for single sheet gypsum plasterboard

** hexagonal wood screw SW 17

